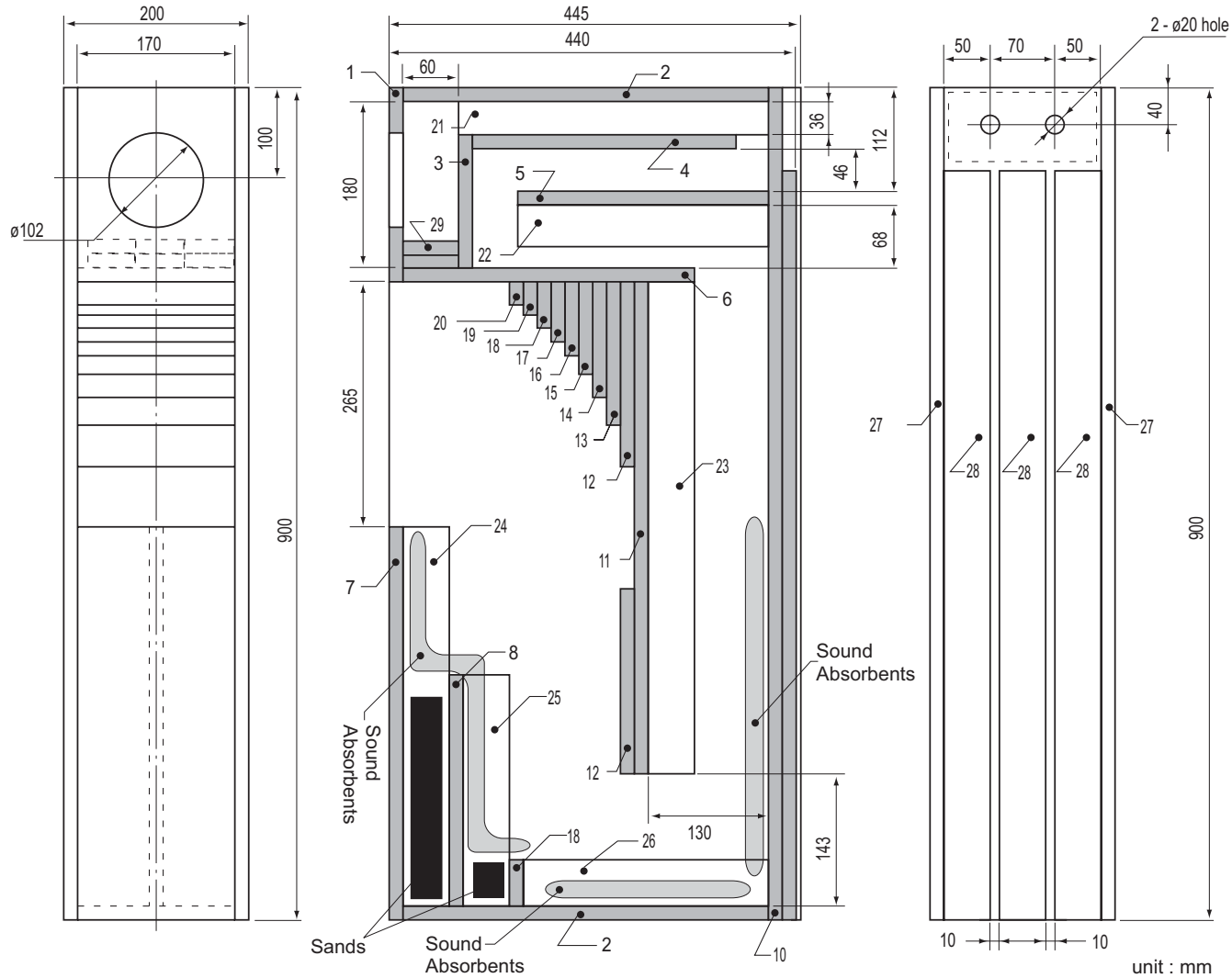




RECOMMENDED ENCLOSURE

FE108EΣ

Recommended Back Loaded Horn Type Enclosure



		29	29	29	29	29	29										
1	11		13	13			16	16		20	20						
							9	9		18	18						
										15	15						
1	11		12	12			12	12		3	3						
			2					7			4					5	
			2														
										10							10

- This tall case clock style box plan is the full-fledged back loaded horn enclosure for FE108Esigma.
- Well turned low frequency realizes tight and massive sound with perceptible fast response.
- Effectively downscaled baffle size realizes prior sound field and image localization, and ensures FE108Esigma's dynamic sound with a abundance of energy.

Cutting Size Chart (1set, unit:mm)

No.	Size (W x H)	Qty	No.	Size (W x H)	Qty
1	170 x 210	1	16	170 x 80	1
2	170 x 395	2	17	170 x 65	1
3	170 x 144	1	18	170 x 50	2
4	170 x 285	1	19	170 x 36	1
5	170 x 271	1	20	170 x 25	1
6	170 x 315	1	21	335 x 36	1
7	170 x 425	1	22	271 x 45	1
8	170 x 250	1	23	532 x 50	1
9	170 x 80	1	24	410 x 50	1
10	170 x 900	1	25	250 x 50	1
11	170 x 532	1	26	265 x 50	1
12	170 x 200	2	27	900 x 445	2
13	170 x 155	1	28	810 x 50	3
14	170 x 125	1	29	60 x 50	6
15	170 x 100	1			

				17	
		14	14	17	
		22		22	
		21		19	
		21		19	
6	6	26		25	
		26		25	
		24			
		24			
		23			
		23			
8	8				
28					29
28					29
28					29
28					29
28					29
28					29

