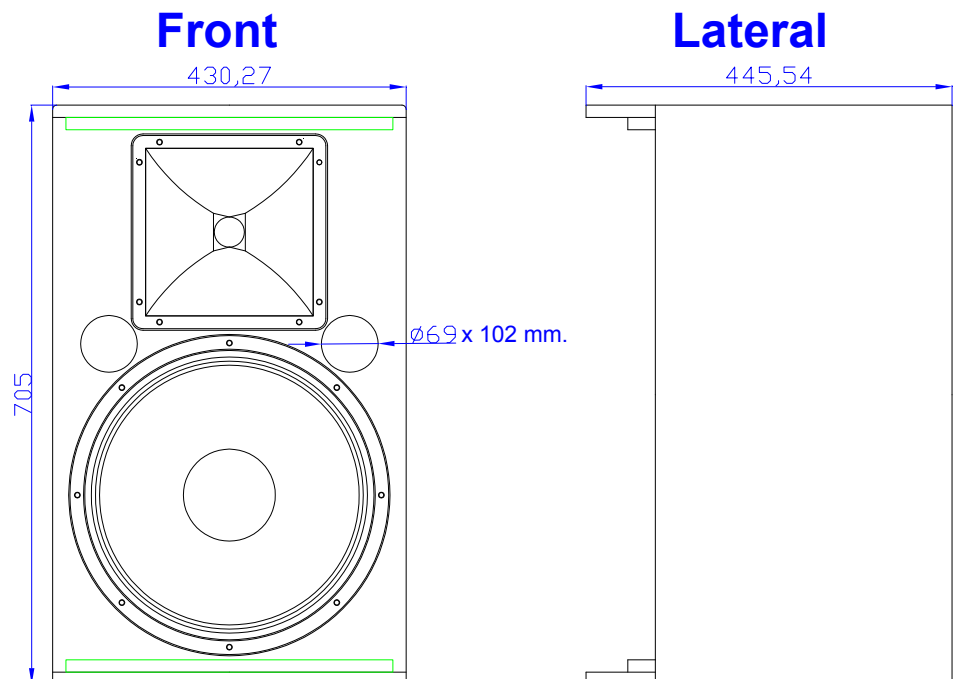
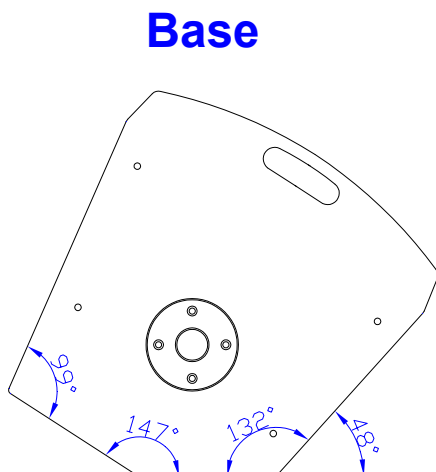
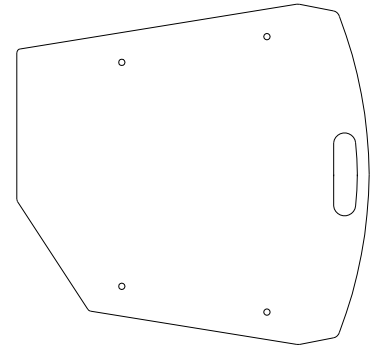
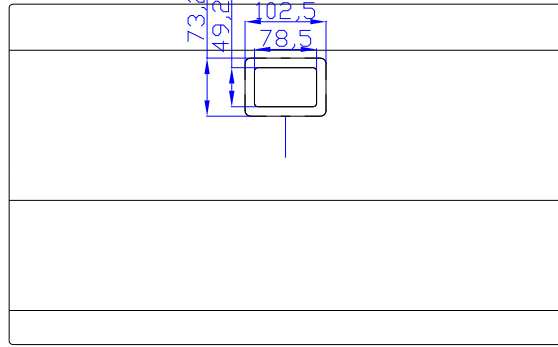
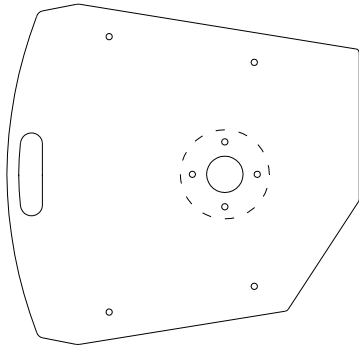


Technical Specifications

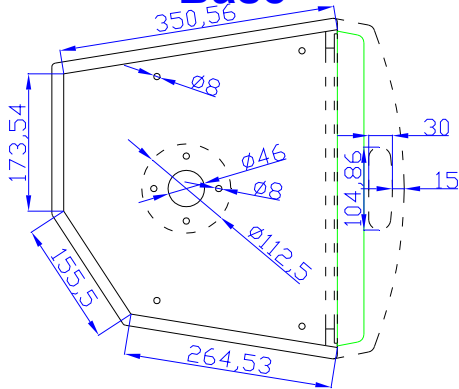
Acoustic cabinet:	FR15B
Description:	2 Way System. 15" and High Frequency unit
Power AES:	700 W.
Power Program:	1.400 W.
Sensitivity 2,83v @ 1m:	97 dB.
Max. SPL continuous:	125 dB.
Max. SPL peak:	131 dB.
Frequency response:	43 - 20.000Hz.
Coverage (H x V):	80° x 50°
Bass Loudspeakers:	15G40
Compression Driver:	SMC65/ND
Constant Directivity Horn:	TD-385
Crossover:	FP-15B/ 4
Hardware:	External



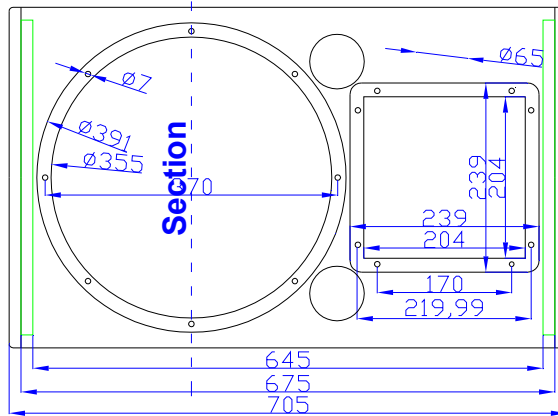
Rear



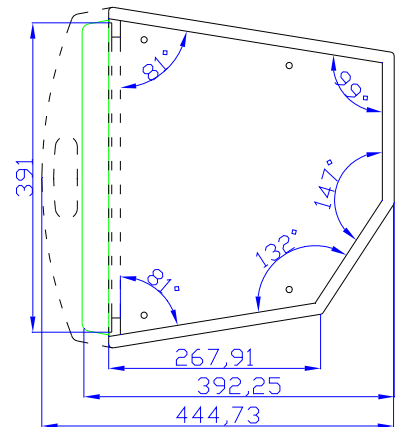
Base



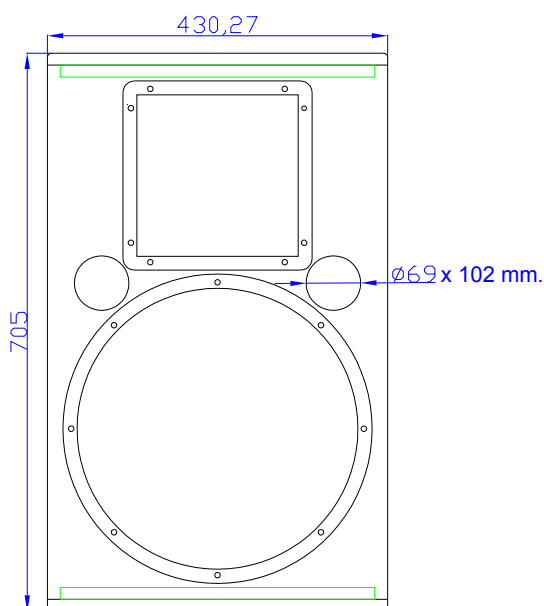
Front



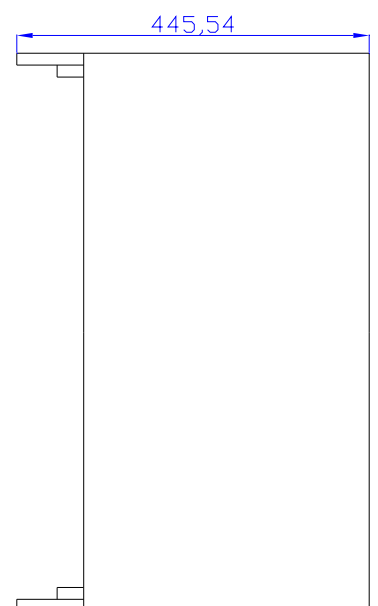
Central



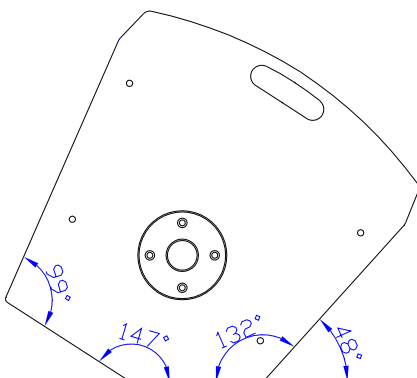
Front



Lateral



Base



15G40

KEY FEATURES

- High power handling (700 W AES)
- Waterproof paper cone
- 4" edgewound copper voice coil with polyimide fiber glass former
- Optimum winding length for increased linear excursion
- Spiders of improved temperature behaviour, retaining good mechanical properties at high power



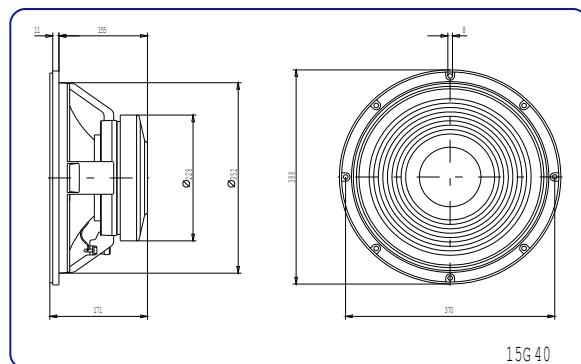
TECHNICAL SPECIFICATIONS

- Nominal diameter 380 mm. 15 in.
- Rated impedance 8 ohms
- Minimum impedance 7 ohms
- Power capacity* 700 w AES
- Program power 1400 w
- Sensitivity 97 dB 2.83v @ 1m @ 2π
- Frequency range 25 - 1500 Hz
- Voice coil diameter 100 mm. 4 in.
- Magnetic assembly weight 9 kg. 19.8 lb.
- BL factor 23 N / A
- Voice coil length 23 mm
- Air gap height 9.5 mm
- X damage (peak to peak) 33 mm

Notes:

*The power capacity is determined according to AES2-1984 (r2003) standard.
Program power is defined as the transducer's ability to handle normal music program material.

DIMENSION DRAWINGS



SMC65Nd

KEY FEATURES

- Composite structure diaphragm (Titanium dome & Mylar surround)
- 3" edgewound aluminium ribbon voice coil
- Excellent high frequencies sound reproduction quality
- Extended frequency response (0.6 - 20 kHz)
- Low weight Neodymium magnet
- High sensitivity (108 dB)

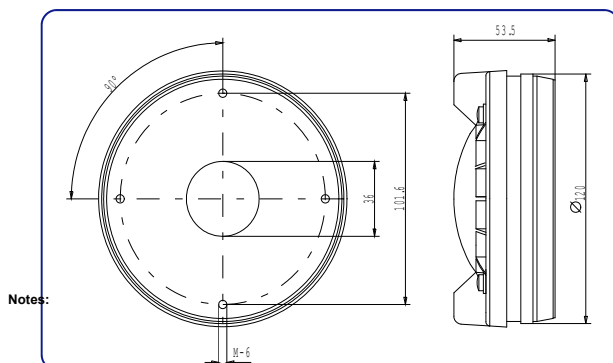


TECHNICAL SPECIFICATIONS

- Throat diameter 3.6 mm. 1.4"
- Rated impedance 8 ohms
- D.C. Resistance 5.5 ohms
- Power capacity* 70 w AES above 1 kHz
- Program power 140 w above 1 kHz
- Sensitivity** 108 dB 1w @ 1m
- Frequency range 600- 20000 Hz
- Voice coil diameter 72.2 mm. 2.87 in.
- Recommended Crossover 800 Hz or higher (12 dB/oct. min.)
- Net weight 2.2 kg. 4.84 lb.

*The power capacity is determined according to AES2-1984 (r2003) standard.
Program power is defined as the transducer's ability to handle normal music program material.
**Sensitivity was measured at 1 m distance, on axis, with 1 w input, averaged in the range 1 - 7 kHz and Coupled to a TD385 horn.

DIMENSION DRAWINGS



TD-385

KEY FEATURES

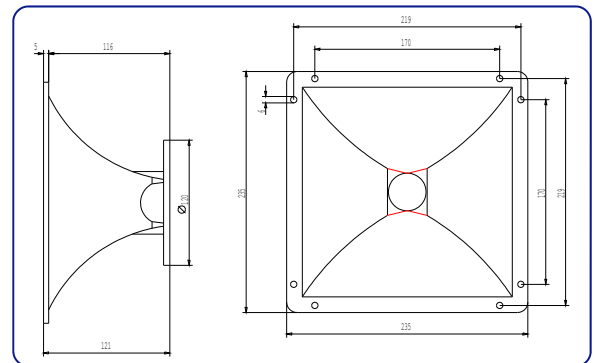
- Designed for compression drivers with 1.4" throat diameter
- It provides uniform response, on and off-axis with a neutral and natural frequency reproduction
- Coverage angles of 80° in the horizontal plane and 50° in the vertical plane
- Precise directivity control in the pass band
- Its square form provides more versatility when mounting in the enclosure

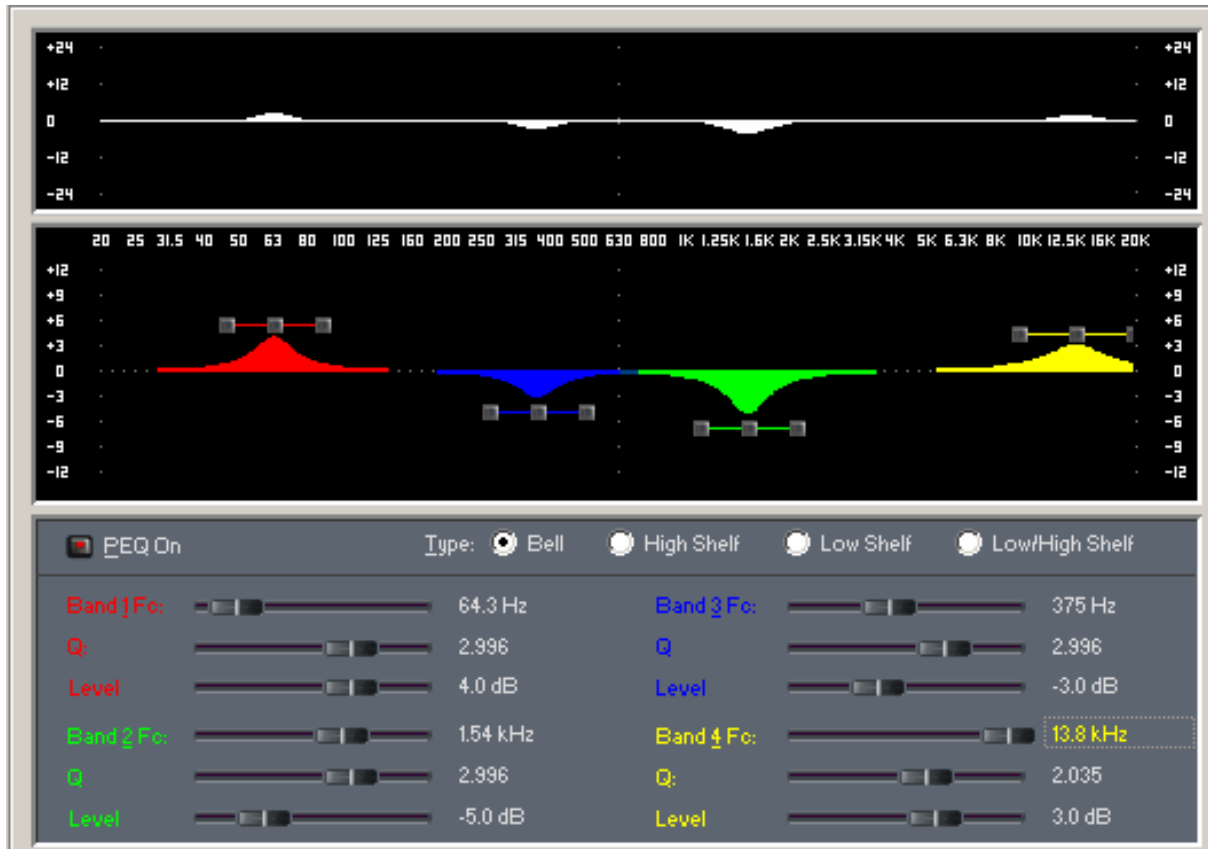
TECHNICAL SPECIFICATIONS

- Throat diameter 36 mm. 1.4 in.
- Horizontal beamwidth 80° (+16°, -32°)
(-6 dB, 1 - 20 kHz)
- Vertical beamwidth 50° (+29°, -14°)
(-6 dB, 1.6 - 20 kHz)
- Directivity factor (Q) 12.4 (average 0.63 - 16 kHz)
- Directivity index (DI) 10.5 dB (+3.5 dB, -3.2 dB)
- Cutoff frequency 800 Hz
- Dimensions (WxHxD) 235x235x120 mm.
9.25x9.25x4.72 in.
- Cutout dimensions (WxH) 204x202 mm.
8.03x7.95 in.
- Net weight 1.2 kg. 2.64 lb.
- Shipping weight 1.53 kg. 3.37 lb.
- Construction Cast aluminium.
Connection of driver by
four screws on a 101.6 mm.
diameter bolt circle.



DIMENSION DRAWINGS





FR15B/4 Crossover

